

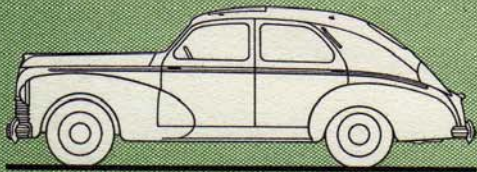


VENDUE
150.000 fois!

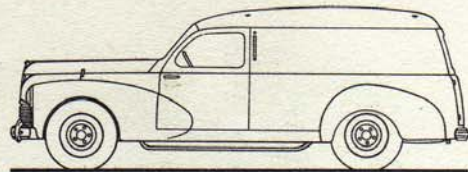
203 Peugeot

Production
Peugeot

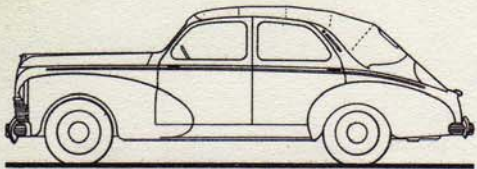
Les 150.000 "203" vendues de 1949 à 1951
attestent, dans le monde entier,
la QUALITÉ de ce Modèle



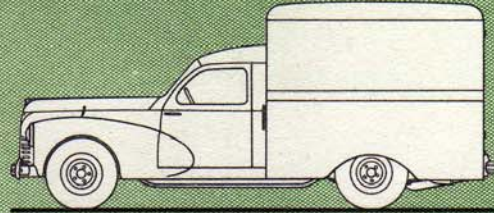
BERLINE TOIT OUVRANT 203



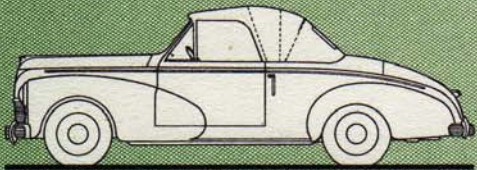
FOURGONNETTE TOLÉE 203 U 600 Kg



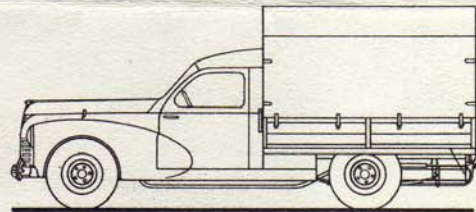
BERLINE DÉCOUVRABLE 203



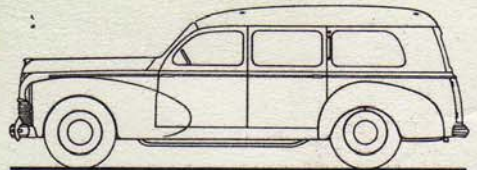
FOURGON TOLÉ 203 U 800 Kg



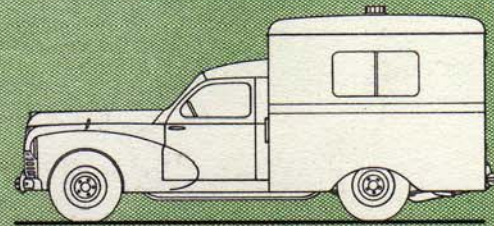
CABRIOLET DÉCAPOTABLE 203



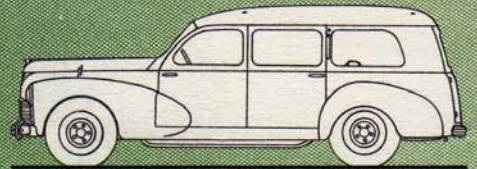
CAMIONNETTE BACHÉE 203 U 850 Kg



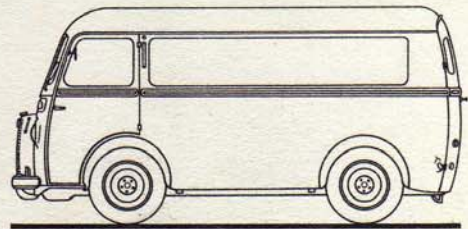
LIMOUSINE FAMILIALE 203 L



AMBULANCE 203 U 2 BRANCARDS



LIMOUSINE COMMERCIALE 203 U



FOURGON TOLÉ D3A 1.400 Kg

